



GMT MONTHLY MEMBERSHIP PROGRESS REPORT

Results as of: 6/30/2017

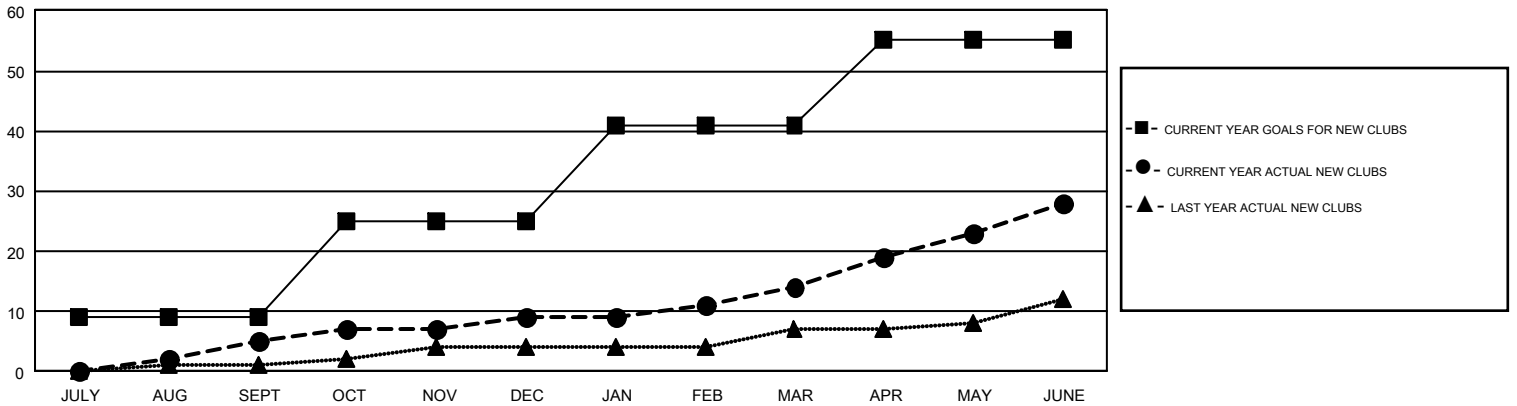
GMT Constitutional Area 1, Group E

GMT: OPEN

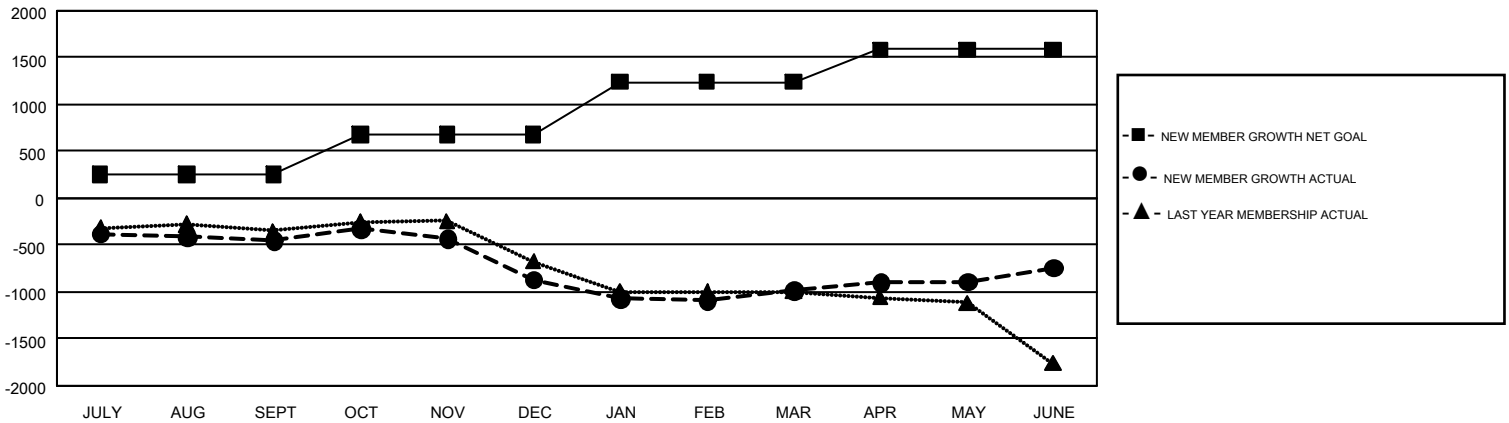
REPORT DOES NOT INCLUDE CLUBS IN UNDISTRICTED AREAS.

Clubs				Members			
RESULTS FOR 2016-2017				RESULTS FOR 2016-2017			
QUARTER	NEW CLUB GOAL	NEW CLUBS	DROPPED CLUBS	QUARTER	NEW MEMBER GROWTH NET GOAL (not reinstated or transfers)	NEW MEMBER GROWTH ACTUAL (not reinstated or transfers)	DROPPED MEMBERS ACTUAL (including transfers)
JULY/AUG/SEPT	9	5	7	JULY/AUG/SEPT	255	978	1,431
OCT/NOV/DEC	16	4	17	OCT/NOV/DEC	426	855	1,268
JAN/FEB/MAR	16	5	7	JAN/FEB/MAR	557	1,088	1,209
APR/MAY/JUNE	14	14	9	APR/MAY/JUNE	349	1,815	1,571

GOALS AND ACTUAL NEW CLUBS CUMULATIVE



GOALS AND ACTUAL MEMBERS CUMULATIVE



DROPPED CLUBS: 40	983 CLUBS OF 1,490 ADDED 1 OR MORE NEW MEMBERS	GENDER DISTRIBUTION
DROPPED MEMBERS		MALE 22,284 (64.38%)
DECEASED 577	CLICK HERE FOR CUMULATIVE MEMBERSHIP DATA	FEMALE 12,329 (35.62%)
CLUB CANCELLED 251		TOTAL FAMILY UNIT MEMBERS 6,284
OTHER 4,651		FAMILY MEMBERS PAYING HALF DUES 3,215
TOTAL 5,479		